

**TAMKO**<sup>®</sup>

# TITAN XT<sup>®</sup>

**PREMIUM ARCHITECTURAL SHINGLES**



**THE MOST INNOVATIVE SHINGLE ON THE MARKET IS NOW CLASS 3 IMPACT RATED<sup>1</sup>  
FEATURING AN INDUSTRY-FIRST WINDGUARD™ WARRANTY WITH COVERAGE UP TO 160 MPH<sup>1</sup>**



**Voted 2024  
Product of the Year**

[tamko.com/poy](http://tamko.com/poy)

Winner Home Protection category.  
Survey of 40,000 people by Kantar.

\*PLEASE CONSULT TAMKO'S LIMITED WARRANTY AND APPLICATION INSTRUCTIONS FOR ANY REQUIREMENTS OR LIMITATIONS. <sup>1</sup>TITAN XT<sup>®</sup> SHINGLES ARE CLASSIFIED BY UL FOR COMPLIANCE WITH UL 2218 CLASS 3 IMPACT RESISTANCE.



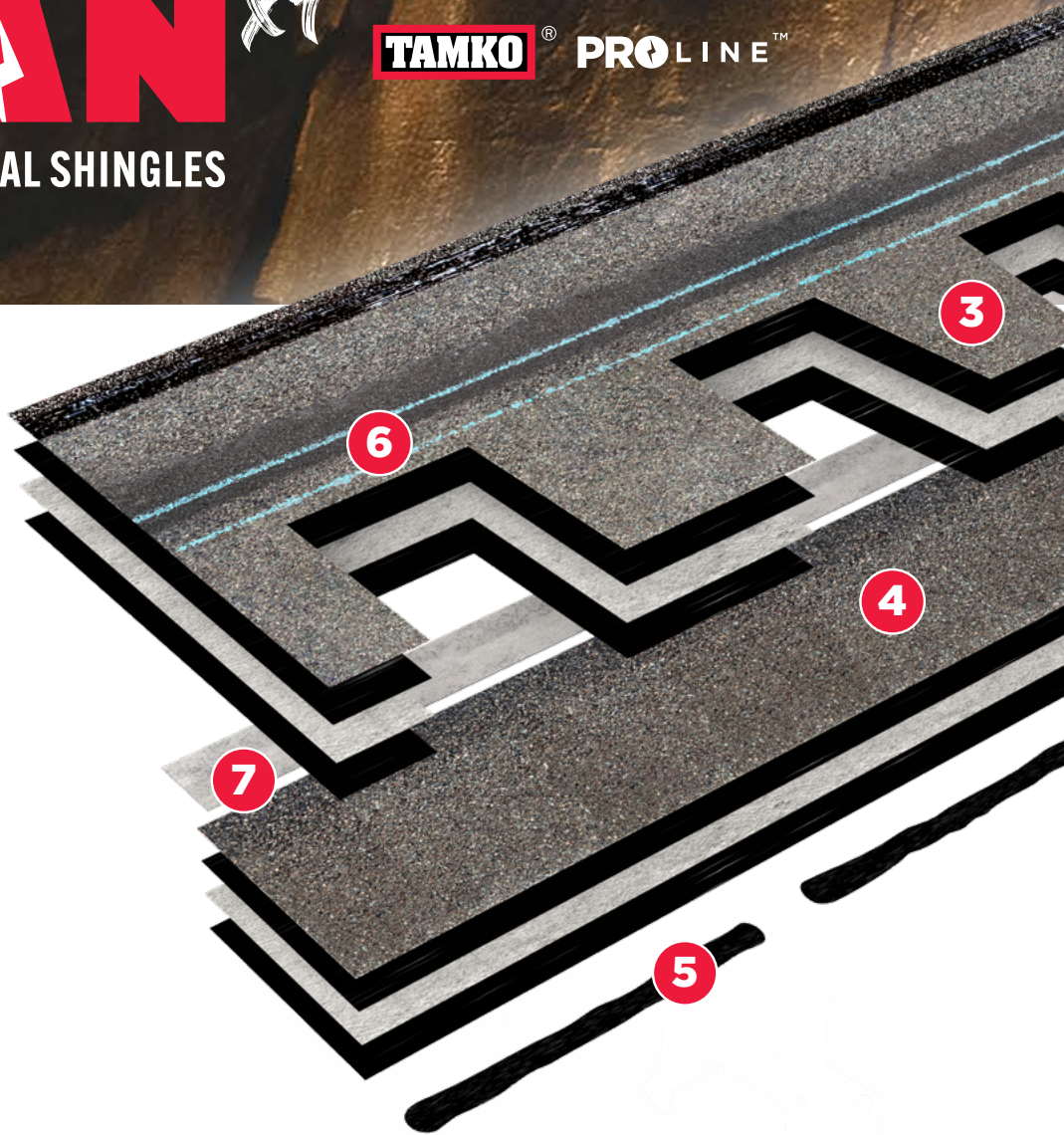
# TITAN XT<sup>®</sup>

TAMKO<sup>®</sup> PROLINE<sup>™</sup>

## PREMIUM ARCHITECTURAL SHINGLES

### TITAN XT<sup>®</sup> SHINGLES FEATURE:

- 1 POWER CORE<sup>®</sup>
- 2 ULTRAMAX WEATHERING<sup>™</sup> LAYER
- 3 PROTECTIVE GRANULES
- 4 APEX COLOR<sup>®</sup> TECHNOLOGY
- 5 ADVANCED FUSION<sup>™</sup> SEALANTS
- 6 RAPID FIRE ZONE<sup>®</sup> NAIL ZONE
- 7 ANCHORLOCK<sup>™</sup> LAYER



**Titan XT<sup>®</sup> shingles feature our largest defined nailing zone EVER.**

Contractors can install quickly and with ease due to a nailing zone up to five times larger than our standard Heritage<sup>®</sup> nailing area\*, possible through our AnchorLock<sup>™</sup> layer reinforcement of the common bond area.

**RAPID FIRE ZONE<sup>®</sup>**  
DESIGNED FOR PROFESSIONAL INSTALLERS

\* Compared with TAMKO's Heritage<sup>®</sup> shingles manufactured in KS, MD, MO and TX.

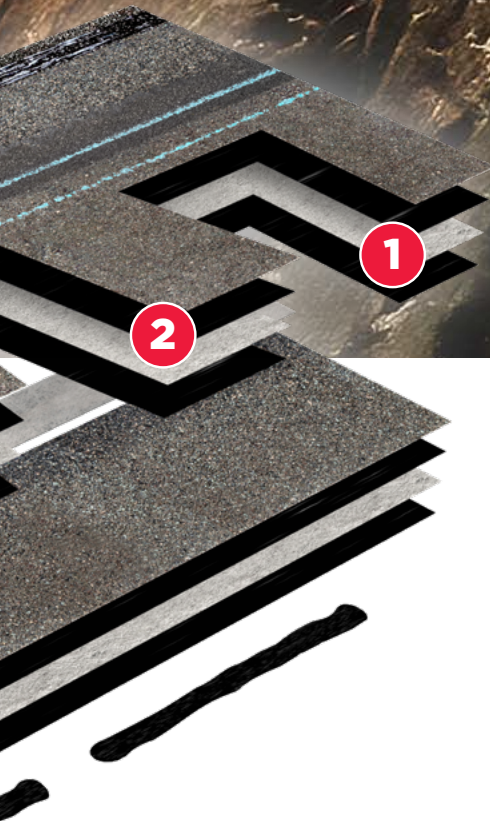




Voted 2024  
Product of the Year

[tamko.com/poy](https://tamko.com/poy)

Winner Home Protection category.  
Survey of 40,000 people by Kantar.



The most INNOVATIVE SHINGLE on the market is now **CLASS 3 IMPACT RATED**† FEATURING an **INDUSTRY-FIRST WINDGUARD™ WARRANTY** with coverage up to **160 MPH**\*

Titan XT® shingles feature some of the most advanced innovative technology in the industry. With powerful engineering, Titan XT shingles are designed to offer an advantage for both homeowners and contractors, combining in-demand product features into one **Extreme Technology** shingle designed to help weather extreme conditions.



WHERE INNOVATION MEETS  
EXTREME TECHNOLOGY®

See how Titan XT® shingles perform at [tamko.com/titanxt](https://tamko.com/titanxt)



WHAT COULD A **160 MPH**  
WIND WARRANTY DO FOR YOU?



**WINDGUARD™** expands TAMKO's standard warranty, providing coverage up to **160 MPH**, with only four nails installed in the Rapid Fire Zone® nailing zone with use of TAMKO® Starter.† Inspired by the combined performance of our AnchorLock™ layer and Advanced Fusion™ sealants to help the shingle hold fast.



Titan XT® shingles feature a reinforcing strip of polyester fabric on the back of the shingle to provide added anchoring for the expanded nailing zone.

\*PLEASE CONSULT TAMKO'S LIMITED WARRANTY AND APPLICATION INSTRUCTIONS FOR ANY REQUIREMENTS OR LIMITATIONS.  
†TITAN XT® SHINGLES ARE CLASSIFIED BY UL FOR COMPLIANCE WITH UL 2218 CLASS 3 IMPACT RESISTANCE.



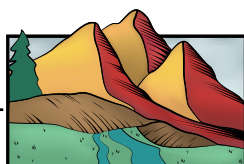
**TAMKO**<sup>®</sup>

**WHATEVER YOUR TASTE OR STYLE,  
TAMKO HAS YOU COVERED.**

TAMKO has the best shingle colors because we do things differently. Proprietary blends and color drops create vibrant color and more natural shadowtones.

THE  
**BEST**  
COLORS

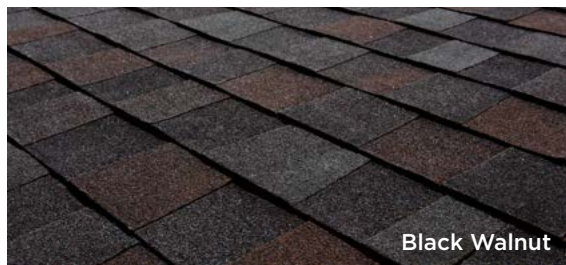
**With two distinct color palettes to choose from,  
TAMKO has just the right color to beautify your home:**



**AMERICA'S**  
NATURAL COLORS



**CLASSIC**  
COLORS



Black Walnut



Rustic Black

### **BOLD & BEAUTIFUL**

America's Natural Colors bring the vibrant tones of the American landscape to your home. If you want your roof to make a bold and beautiful visual statement, choose from America's Natural Colors.

### **SUBTLE & SOPHISTICATED**

For those who prefer a softer, more even-toned look for their roof, choose one of TAMKO's Classic Colors featuring the subtle, sophisticated color blends that have long made TAMKO an industry favorite.

*The shingle images above show the difference between America's Natural Colors and Classic Colors. Black Walnut and Rustic Black are both "black" shingles. Look closely and you can see Black Walnut includes vibrant splashes of color that will draw the eye to the roof.*

## **SEE OUR SHINGLES ON YOUR HOME**

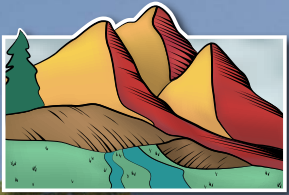
View TAMKO shingle colors and styles with the TAMKO<sup>®</sup> Roof Visualizer to find the right fit for your home. Customize sample homes, or upload a street view photo of a home to get started.



See how TAMKO shingles could look on your home at [tamko.com/visualizer](https://tamko.com/visualizer)







# AMERICA'S

NATURAL COLORS





Black Walnut



Natural Timber



Black Walnut



Natural Timber



Thunderstorm Grey





Desert Sand



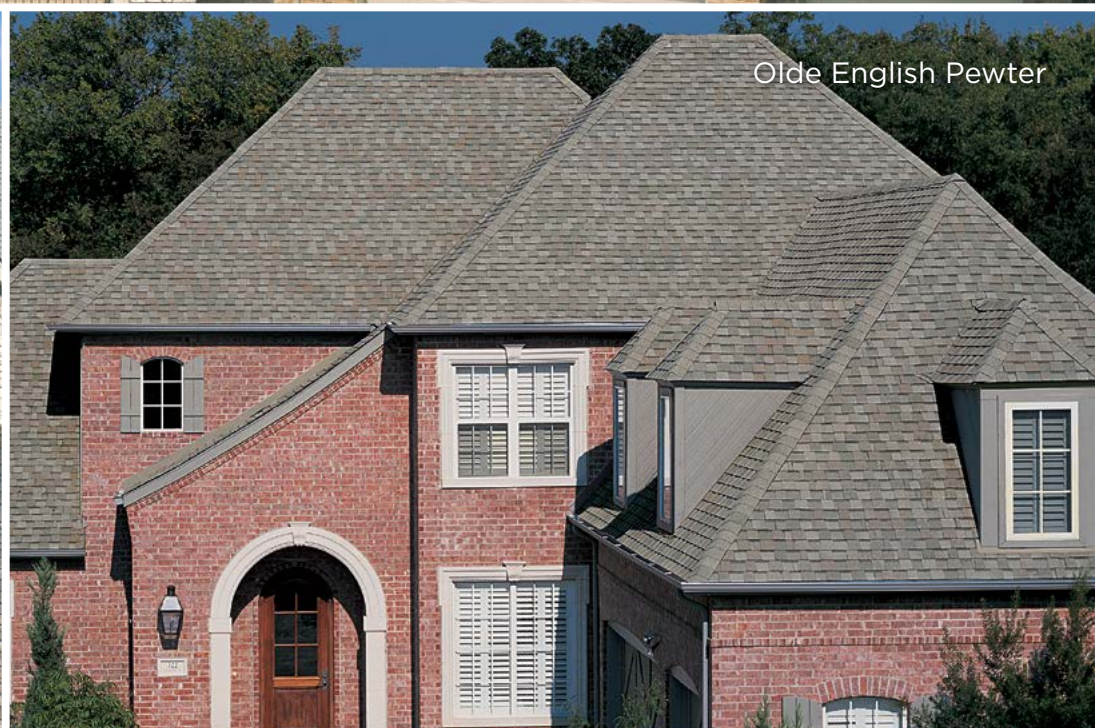
# CLASSIC COLORS



Glacier White



Olde English Pewter



Desert Sand



Glacier White



Olde English Pewter





Rustic Redwood



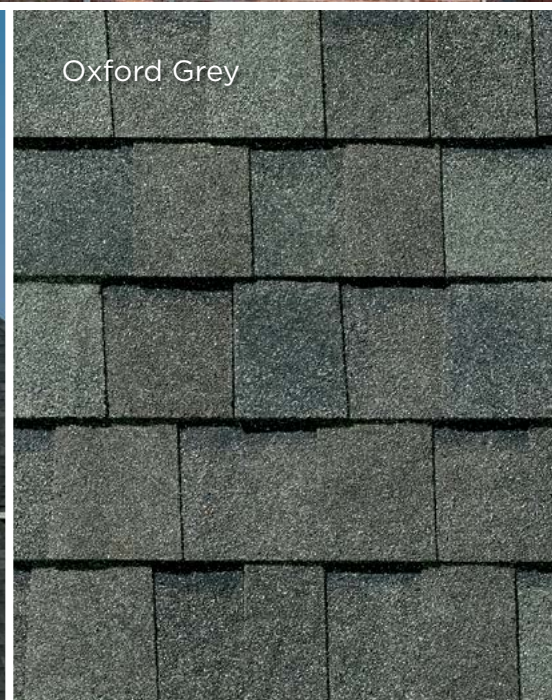
Oxford Grey



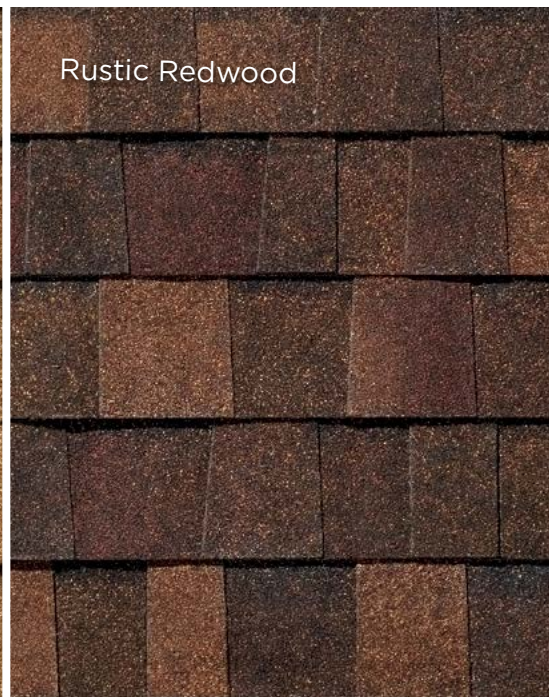
Rustic Black



Oxford Grey









Virginia Slate



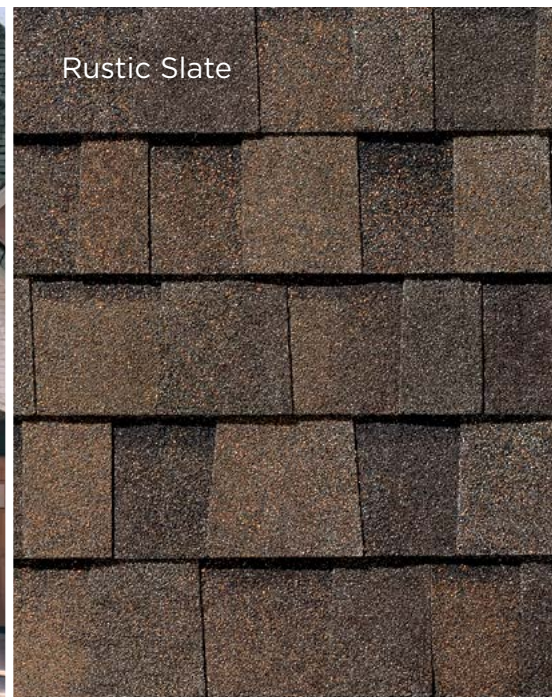
Rustic Slate



Shadow Grey



Rustic Slate







Shadow Grey



Virginia Slate



Weathered Wood







## BUILDING PRODUCTS FOR THE PROFESSIONAL.

TAMKO Building Products LLC is a leading independent manufacturer of residential roofing shingles crafted with American pride for more than 80 years. At TAMKO, the popular Heritage® and Proline™ shingle series features the best roofing colors on the market that are backed by a brand name recognized for its rich history, core values of honesty and integrity, quality products and processes, authority with building professionals and support for its community. For more information about TAMKO, visit our website at [www.tamko.com](http://www.tamko.com).



1-800-641-4691  
[tamko.com](http://tamko.com)

### TAMKO products are designed to work together, building layer upon layer, for better protection with a TAMKO Complete® Roof System.

Learn more about the requirements for an extended Full Start® period by upgrading to a TAMKO WXTShield Enhanced System Warranty® at [tamko.com/enhancedwarranties](http://tamko.com/enhancedwarranties)



### PROLONG

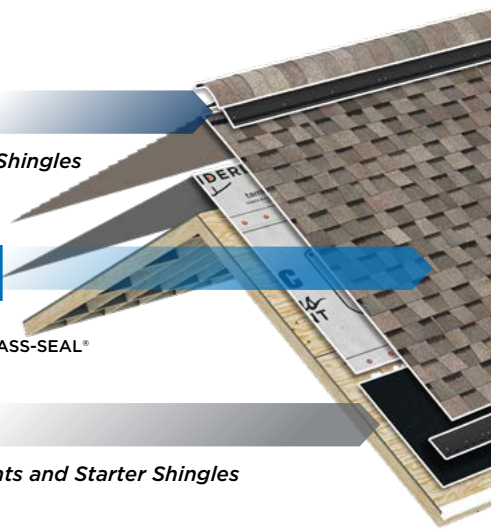
Ventilation and Hip & Ridge Shingles

### PERFORM

Shingles TITAN XT® • HERITAGE®  
STORMFIGHTER FLEX™ • ELITE GLASS-SEAL®

### PROTECT

Waterproofing, Underlayments and Starter Shingles



#### Titan XT® shingles meet the following classifications

**UL Listed for:**  
Class A Fire Resistance

**UL Classified:**  
Wind Resistance  
Impact Resistance  
ASTM D3462 and ICC-ES  
Acceptance Criteria AC438

**Tested in Compliance with:**  
UL 790/ASTM E 108, Class A  
ASTM D3161, Class F  
ASTM D7158, Class H  
UL 2218 Class 3 Impact Resistance†  
ASTM D3462  
ICC-ES Acceptance Criteria AC438

**UL Evaluation Reports:**  
UL Evaluation Report  
ER2919-01  
UL Evaluation Report  
ER2919-02

**Florida Building Code  
Product Approval**  
FL 18355  
FL 35321  
**Miami-Dade County  
Product Control Approved**

Desert Sand, Glacier White, and Olde English Pewter are listed by the Cool Roof Rating Council® (CRRC)

## SHINGLE COLOR SELECTION TIPS

For more information on shingle color selection tips and available colors by zip code, visit [tamko.com](http://tamko.com)

#### START YOUR COLOR SEARCH WITH BROCHURES & VISUALIZATION PROGRAMS.



The printed colors you see in any brochure or digital visualization program are only as accurate as current printing and digital technology allows.

#### VIEW AN ACTUAL ROOF INSTALLATION.



Shingles may look different installed on a roof compared to viewing only one shingle. Also, shingle colors can appear differently during different times of day, in different amounts of sunlight (full, partial, etc.).

#### VIEW ACTUAL SHINGLES.



Viewing actual shingles is the only way to see all the nuances in color that will be represented on your roof once the project is complete.

#### CHECK YOUR SHINGLES BEFORE INSTALLATION.



TAMKO is not responsible for color claims where the wrong color is installed on a roof. It is better to be safe and perform a final in-person check of the shingles to confirm product and color before they are installed.

Certain colors and products may not be available in your area. Information included in this item was current at the time of printing. To obtain a copy of the most current version of this item, visit us online at [tamko.com](http://tamko.com) or call us at 1-800-641-4691.

SHINGLES BEGIN TO AGE AS SOON AS THEY ARE EXPOSED TO NATURE. BUILDINGS EXPERIENCE AGING FACTORS DIFFERENTLY, SO IT IS DIFFICULT TO PREDICT HOW LONG SHINGLES WILL LAST. TAMKO PROVIDES A LIMITED WARRANTY FOR MANY PRODUCTS, THAT INCLUDES A BINDING ARBITRATION CLAUSE AND OTHER TERMS AND CONDITIONS WHICH ARE INCORPORATED HEREIN BY REFERENCE. YOU MAY OBTAIN A COPY OF THE LIMITED WARRANTY AT [TAMKO.COM](http://TAMKO.COM) OR BY CALLING 1-800-641-4691.

†TITAN XT SHINGLES ARE CLASSIFIED BY UL FOR COMPLIANCE WITH UL 2218 CLASS 3 IMPACT RESISTANCE. UL 2218 TESTING UTILIZES A DROPPED STEEL BALL WHICH MAY NOT CORRELATE WITH REAL WORLD ROOFTOP EXPERIENCE WITH THE IMPACT OF STORM DRIVEN HAIL OR OTHER OBJECTS.